

i-Trade Application FAQs v1.2

- 1. WHAT IS I-TRADE APPLICATION?**
- 2. WHAT IS SYSTEM REQUIREMENT OF I-TRADE APPLICATION?**
- 3. HOW TO USE I-TRADE APPLICATIONS WITH DIFFERENT BROWSERS?**
- 4. FAILED TO LAUNCH I-TRADE APPLICATION**
- 5. HOW CAN DISPLAY I-TRADE APPLICATION DIFFERENT LANGUAGE?**
- 6. HOW CAN I IMPROVE THE PERFORMANCE OF THE APPLICATION?**
- 7. HOW DO I KNOW THE I-TRADE APPLICATION IS STILL ONLINE AND IS RECEIVING MARKET INFORMATION?**
- 8. RE-INSTALL JAVA RUNTIME**

1. What is i-Trade Application?

i-Trade Application is an application provides stock trading service and an optional service that provides real-time/snapshot market information.

2. What is system requirement of i-Trade Application?

Hardware

Minimum: Intel Core i3, 2GB RAM, 10GB free hard disk space

Recommended: Intel Core i5, 4GB RAM, 10GB free hard disk space

Display

Minimum: 1024x768, 16 bits color

Recommended: 1024x768 or higher, 24 bit color

Operating System

Microsoft Windows XP (Chinese/English)

Microsoft Windows Vista (Chinese/English)

Microsoft Windows 7 (Chinese/English)

Java

Minimum: Sun JRE 1.7

Internet Access

Minimum: 1M bps

Recommended: Broadband

3. How to use i-Trade Applications with Different Browsers?

The website link of i-Trade Application is a jnlp file. IE (Internet Explorer) and Firefox would automatically try to use Java to open the file directly and start the application. Other browsers would treat it as an attachment and download it without opening.

In this scenario, we need to find the location of the downloaded jnlp file and open it manually. By default, system would choose Java to open the file and start the application.

i) Chrome



In the above figure, the clicked website link of the i-Trade Application is “HK Layout(繁體中文) for Windows”. After clicking, a file is downloaded and the downloaded file is shown at bottom left corner. Click the file and Java would open and start the i-Trade Application.

ii) IE (Internet Explorer)

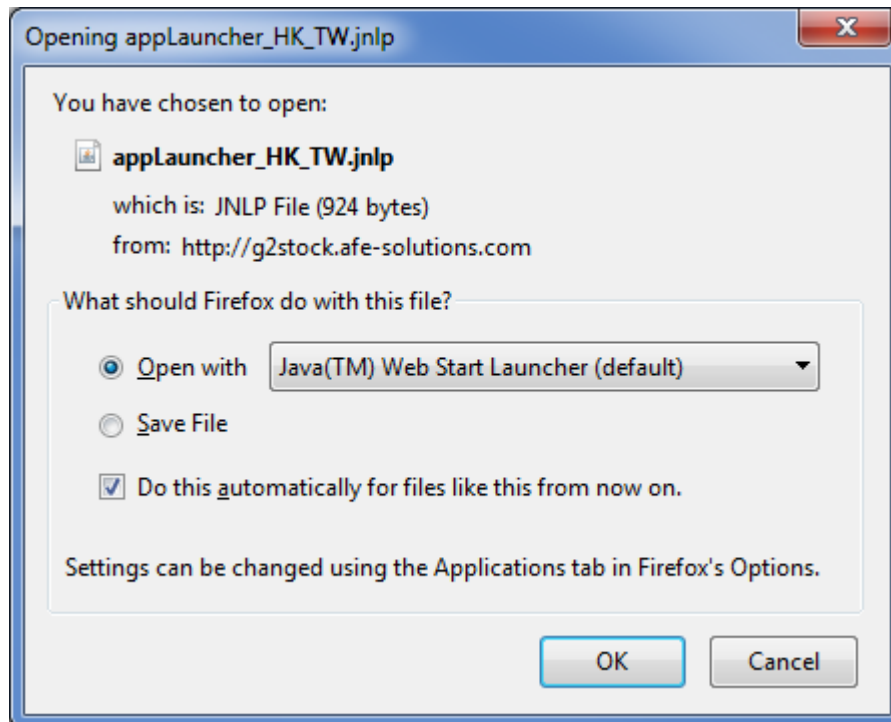


In the above figure, the clicked website link of the i-Trade Application is “HK Layout(繁體中文) for Windows”. After clicking, Java would directly open and start the i-Trade Application.

iii) Firefox

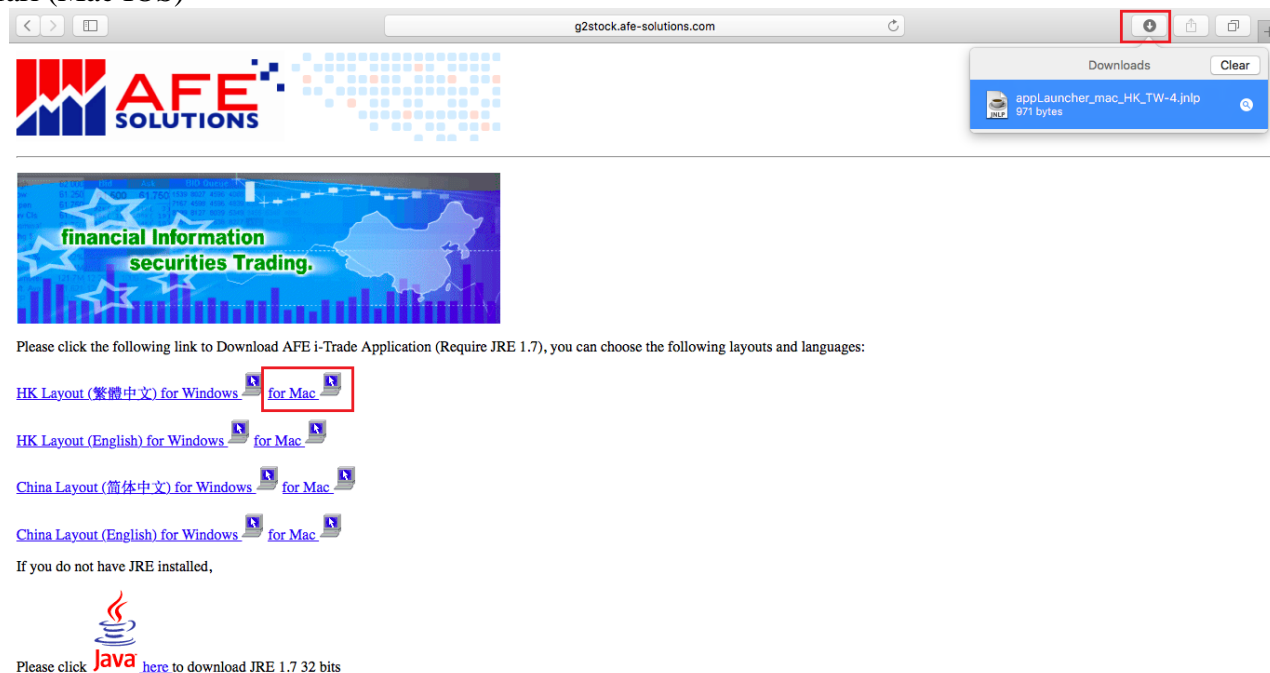


In the above figure, the clicked website link of the i-Trade Application is “HK Layout(繁體中文) for Windows”. After clicking, Java would directly open and start the i-Trade Application.



If the above dialog appears, please choose "Open with Java Web Start Launcher" and also check "Do this automatically for files like this from now on", then next time i-Trade Application will be launched directly without this dialog.

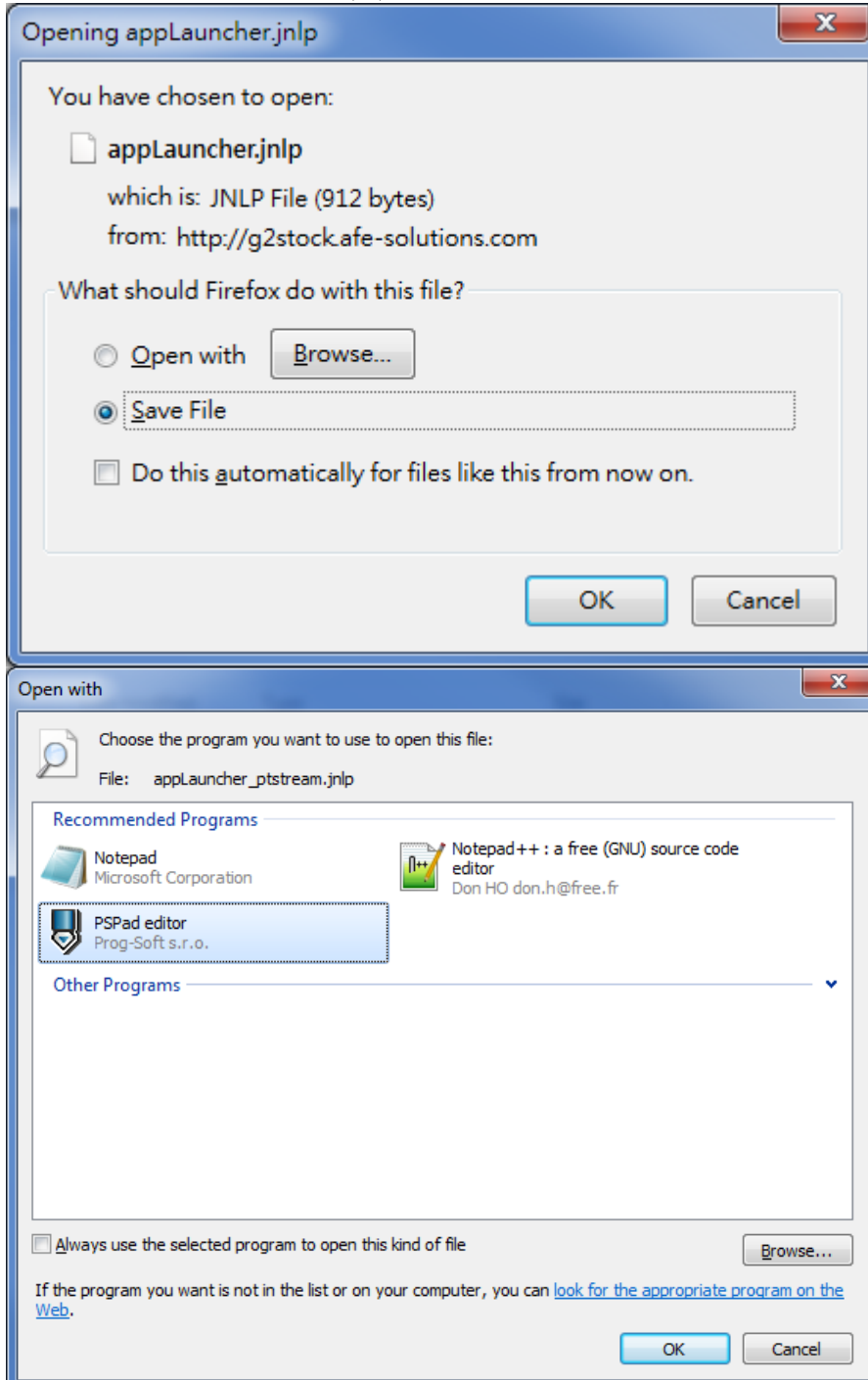
iv) Safari (Mac IOS)



In the above figure, the clicked website link of the i-Trade Application is “HK Layout(繁體中文) for Mac”. After clicking, Safari would download the jnlp file. Click the download icon at the top and a list of downloaded files would be shown according to downloaded time. Click the file and Java would open and start the i-Trade Application.

4. Failed to launch i-Trade Application

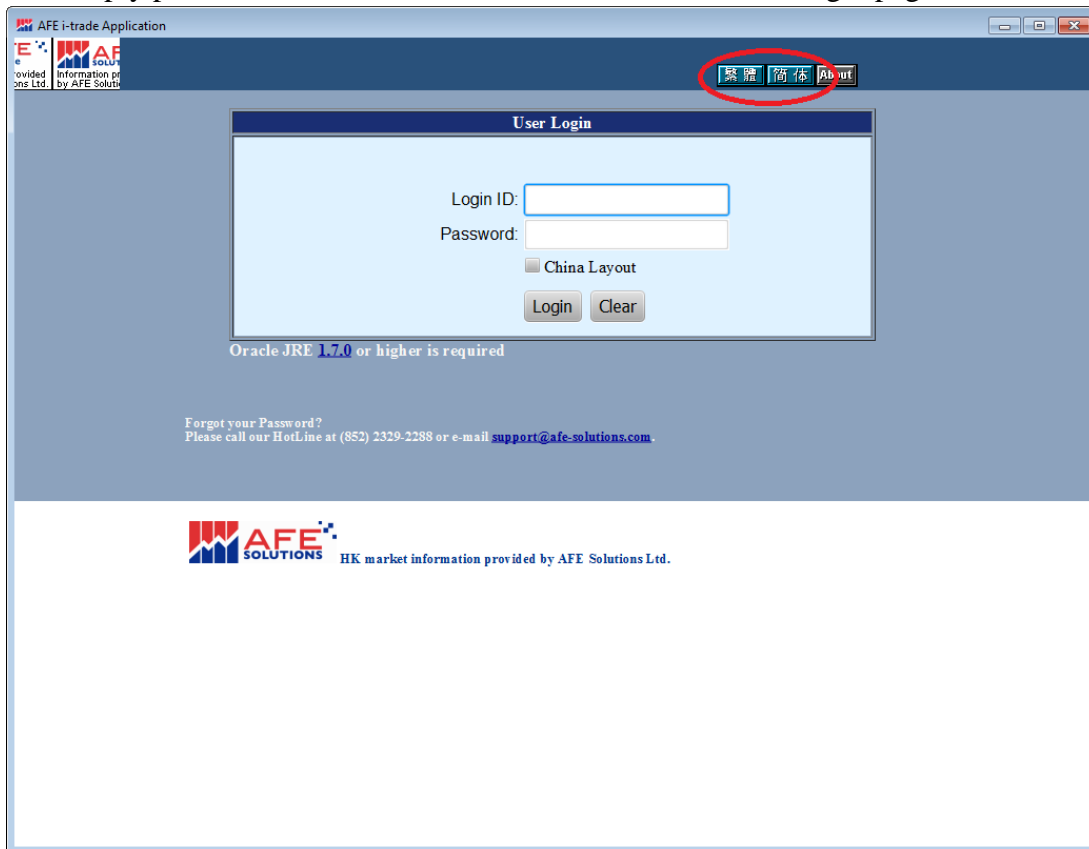
If you followed the instructions in the previous part but i-Trade Application failed to launch, or a dialog box appeared asking you to choose a program to open the file, possibly you have not (properly) installed a Java Runtime Environment (JRE) on your computer. Please follow the instructions in section 8 to (re)install Java.



If one of the above dialog appears, please follow section 8.2 to install Java.

5. How can display i-Trade Application different language?

i-Trade Application can support 'English', 'Tradition Chinese' and 'Simplified Chinese'. User can simply press **ENG**, **繁體** or **简体** button from the login page



AFE i-trade Application

繁體 简体 About

User Login

Login ID:

Password:

☐ China Layout

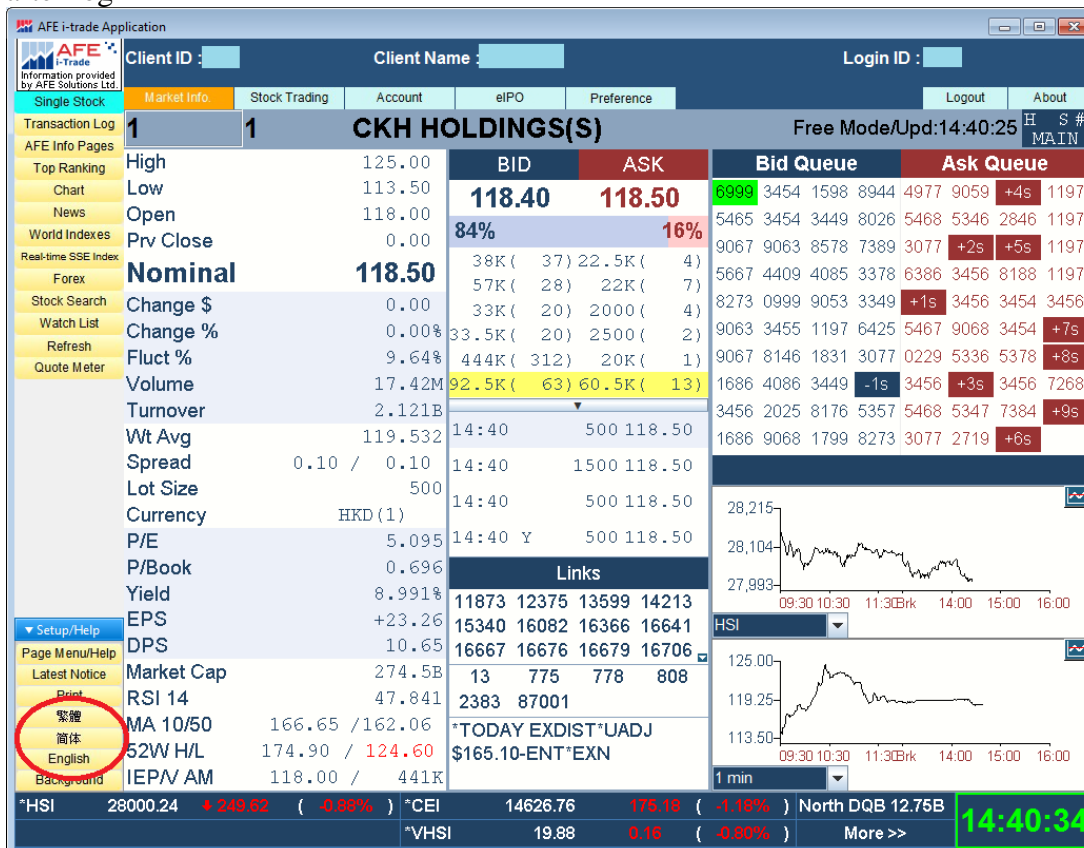
Login Clear

Oracle JRE 1.7.0 or higher is required

Forgot your Password?
Please call our HotLine at (852) 2329-2288 or e-mail support@afe-solutions.com.

AFE SOLUTIONS HK market information provided by AFE Solutions Ltd.

or press **English**, **繁體** or **简体** button from the Setup/Help menu after login



The screenshot shows the AFE i-Trade Application interface. The top bar displays 'Client ID', 'Client Name', and 'Login ID'. Below this, there are tabs for 'Market Info', 'Stock Trading', 'Account', 'eIPO', and 'Preference'. The main data area is for 'CKH HOLDINGS(S)' in 'Free Mode/Upd:14:40:25'. It shows a table with 'BID' and 'ASK' prices, 'Bid Queue', and 'Ask Queue'. The 'BID' price is 118.40 and the 'ASK' price is 118.50. The 'Bid Queue' and 'Ask Queue' show various order sizes and prices. The interface also includes a left sidebar with menu items like 'Single Stock', 'Transaction Log', 'AFE Info Pages', 'Top Ranking', 'Chart', 'News', 'World Indexes', 'Real-time SSE Index', 'Forex', 'Stock Search', 'Watch List', 'Refresh', 'Quote Meter', 'Setup/Help', 'Page Menu/Help', 'Latest Notice', 'Print', and language options: '繁體' (highlighted), '简体', and 'English'. The bottom status bar shows market indices like *HSI, *CEI, *VHSI, and *TODAY EXDIST*UADJ, along with a clock showing 14:40:34.

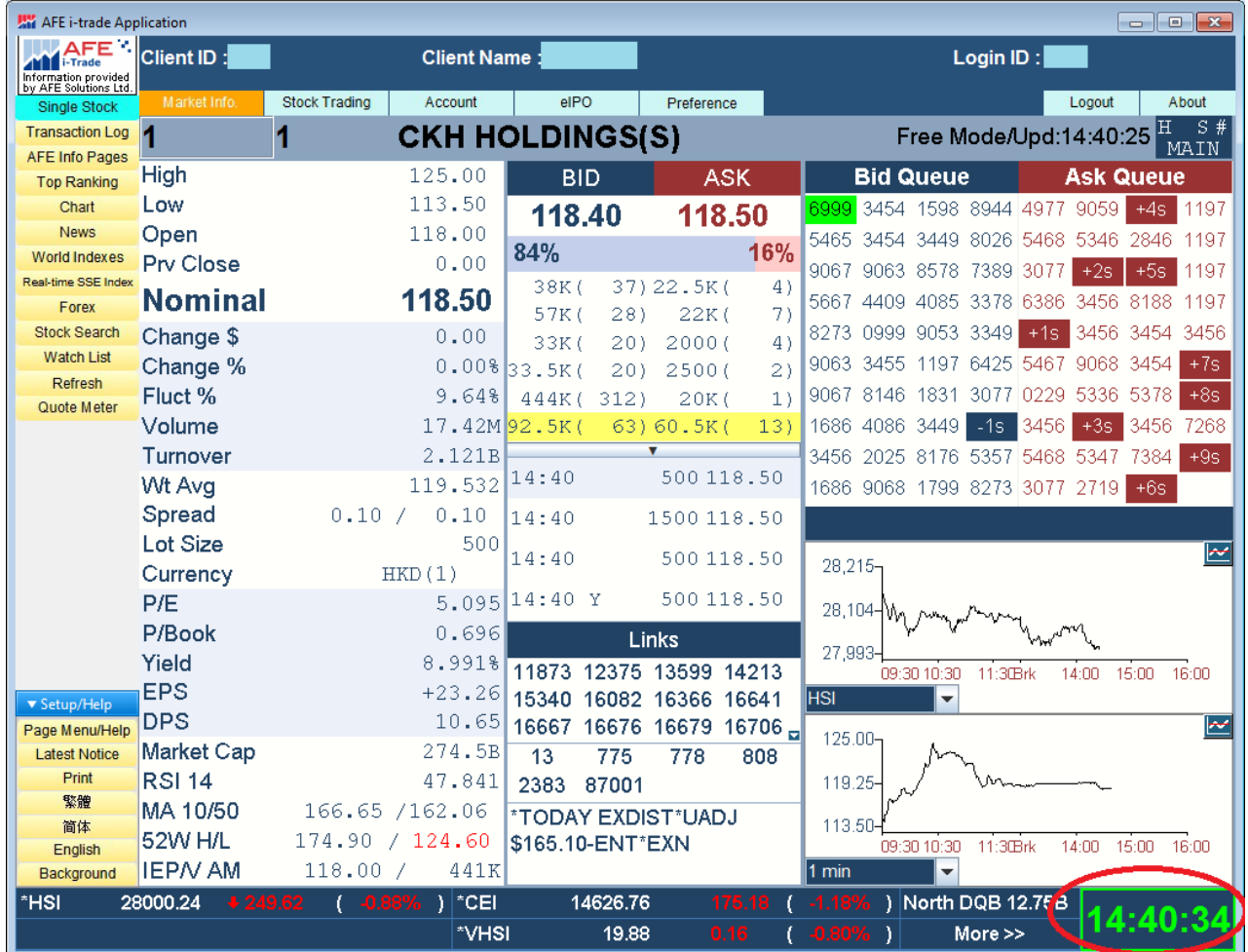
to view information in English, Tradition Chinese or Simplified Chinese respectively.

6. How can I improve the performance of the application?

Since i-Trade Application delivers real-time streaming stock market, the performance can be greatly improved if you use the broadband Internet access. In addition, the performance can be improved if there is more free memory available (RAM). So we recommend you to close other applications BEFORE logging into the service in order to enjoy the best performance.

7. How do I know the i-Trade Application is still online and is receiving market information?

The time display at the bottom right corner should be in green color all the time. If the time display turns to red, it means your Internet connection is either not stable or lost. i-Trade Application will reconnect itself when the Internet connection is available and health again.



AFE i-trade Application

Client ID : Client Name : Login ID :

Single Stock **Market Info.** Stock Trading Account eIPO Preference Logout About

Transaction Log **1** **1** **CKH HOLDINGS(S)** Free Mode/Upd:14:40:25 H S # MAIN

AFE Info Pages

- Top Ranking High 125.00
- Chart Low 113.50
- News Open 118.00
- World Indexes Prv Close 0.00
- Real-time SSE Index **Nominal 118.50**
- Forex
- Stock Search Change \$ 0.00
- Watch List Change % 0.00%
- Refresh Fluct % 9.64%
- Quote Meter
- Volume 17.42M
- Turnover 2.121B
- Wt Avg 119.532
- Spread 0.10 / 0.10
- Lot Size 500
- Currency HKD (1)
- P/E 5.095
- P/Book 0.696
- Yield 8.991%
- EPS +23.26
- DPS 10.65
- Market Cap 274.5B
- RSI 14 47.841
- MA 10/50 166.65 / 162.06
- 52W H/L 174.90 / **124.60**
- Background IEPV AM 118.00 / 441K

BID ASK

118.40 118.50

84% 16%

Bid Queue Ask Queue

6999	3454	1598	8944	4977	9059	+4s	1197
5465	3454	3449	8026	5468	5346	2846	1197
9067	9063	8578	7389	3077	+2s	+5s	1197
5667	4409	4085	3378	6386	3456	8188	1197
8273	0999	9053	3349	+1s	3456	3454	3456
9063	3455	1197	6425	5467	9068	3454	+7s
9067	8146	1831	3077	0229	5336	5378	+8s
1686	4086	3449	-1s	3456	+3s	3456	7268
3456	2025	8176	5357	5468	5347	7384	+9s
1686	9068	1799	8273	3077	2719		+6s

Links

11873	12375	13599	14213
15340	16082	16366	16641
16667	16676	16679	16706
13	775	778	808
2383	87001		

***TODAY EXDIST*UADJ \$165.10-ENT*EXN**

HSI

28,215

28,104

27,993

09:30 10:30 11:30Brk 14:00 15:00 16:00

HSI

125.00

119.25

113.50

09:30 10:30 11:30Brk 14:00 15:00 16:00

1 min

***HSI 28000.24 +249.62 (-0.88%) *CEI 14626.76 175.19 (-1.18%) North DQB 12.75B**

***VHSI 19.88 0.16 (-0.80%)**

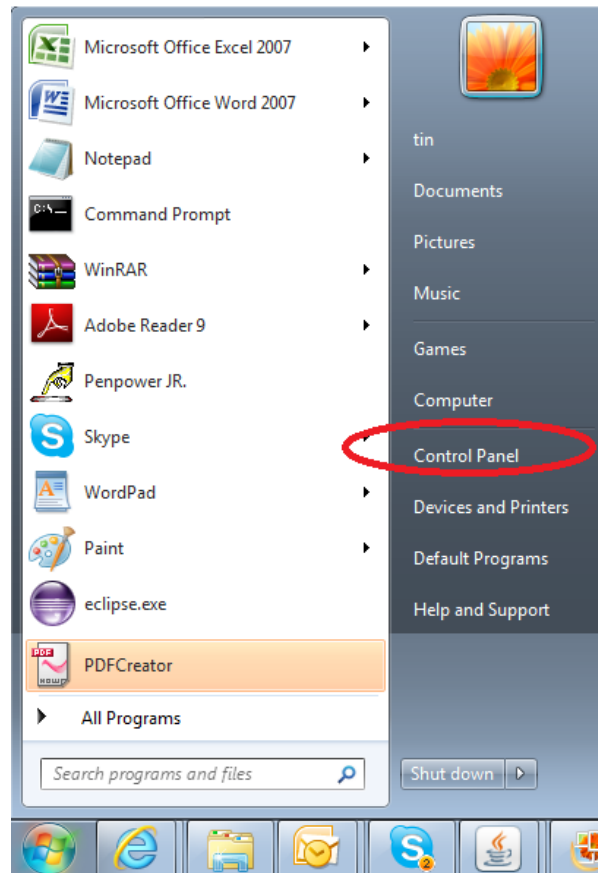
More >>

14:40:34

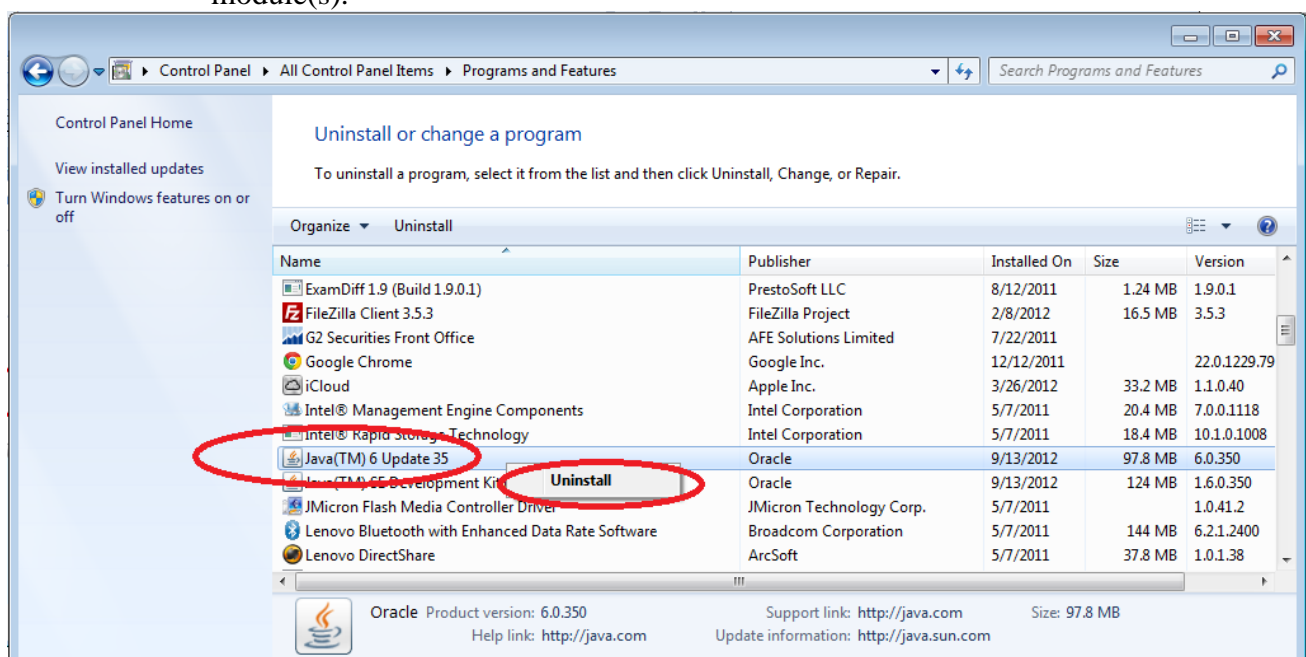
8. Re-install Java Runtime

8.1 Uninstall Java Plug-in 7 if necessary

Open Windows "Control Panel"



Clicking on the "Programs and Features" icon and then **right-click** on the "Java..." and select "Uninstall" popup menu one by one to uninstall all Java Plug-in module(s).



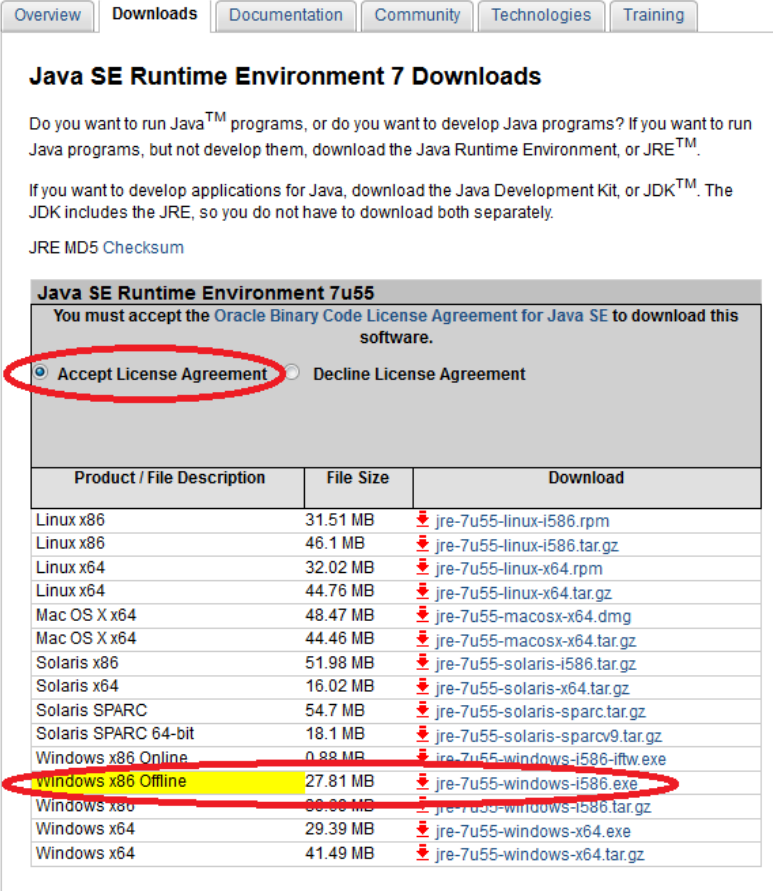
8.2 Install Java Plug-in 7 if necessary

1. Download Java from Sun Microsystems. Please use the following link to go to Sun Microsystems download page to download Java Plug-in module.

The Java Plug-in download link:

<http://www.oracle.com/technetwork/java/javase/downloads/jre7-downloads-1880261.html>

2. Select "Accept License Agreement" and then clicking on the "jre-7u55-windows-i586.exe" to download and install JRE 1.7.



Java SE Runtime Environment 7 Downloads

Do you want to run Java™ programs, or do you want to develop Java programs? If you want to run Java programs, but not develop them, download the Java Runtime Environment, or JRE™.

If you want to develop applications for Java, download the Java Development Kit, or JDK™. The JDK includes the JRE, so you do not have to download both separately.

JRE MD5 Checksum

Java SE Runtime Environment 7u55

You must accept the Oracle Binary Code License Agreement for Java SE to download this software.

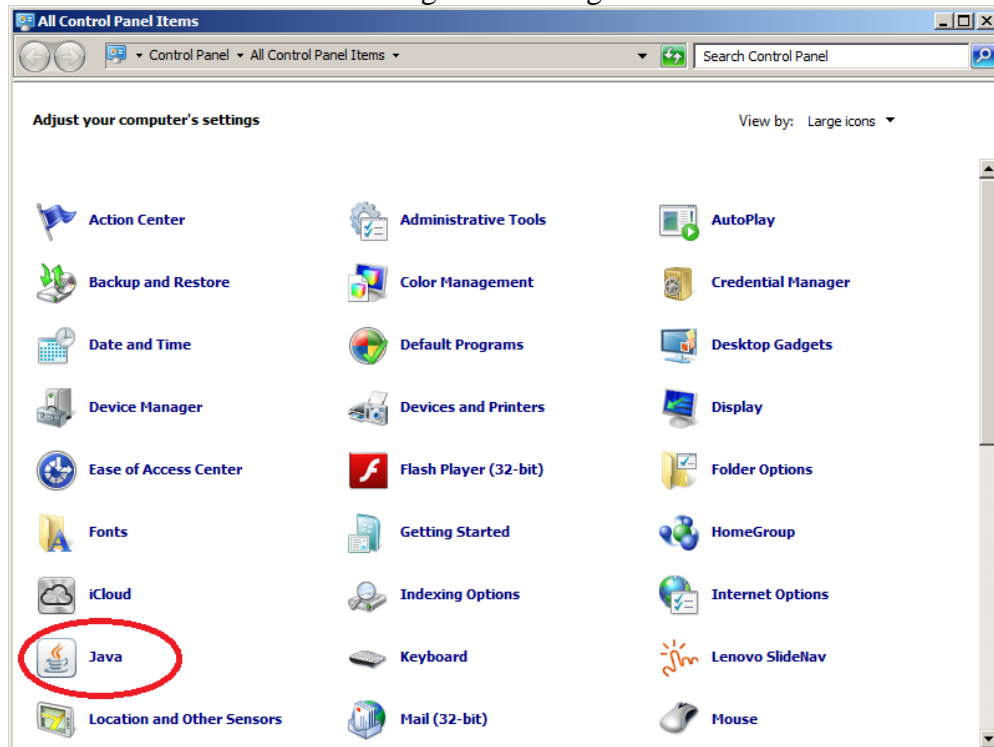
☒ Accept License Agreement ☐ Decline License Agreement

Product / File Description	File Size	Download
Linux x86	31.51 MB	jre-7u55-linux-i586.rpm
Linux x86	46.1 MB	jre-7u55-linux-i586.tar.gz
Linux x64	32.02 MB	jre-7u55-linux-x64.rpm
Linux x64	44.76 MB	jre-7u55-linux-x64.tar.gz
Mac OS X x64	48.47 MB	jre-7u55-macosx-x64.dmg
Mac OS X x64	44.46 MB	jre-7u55-macosx-x64.tar.gz
Solaris x86	51.98 MB	jre-7u55-solaris-i586.tar.gz
Solaris x64	16.02 MB	jre-7u55-solaris-x64.tar.gz
Solaris SPARC	54.7 MB	jre-7u55-solaris-sparc.tar.gz
Solaris SPARC 64-bit	18.1 MB	jre-7u55-solaris-sparcv9.tar.gz
Windows x86 Online	0.88 MB	jre-7u55-windows-i586-iftw.exe
Windows x86 Offline	27.81 MB	jre-7u55-windows-i586.exe
Windows x86	38.86 MB	jre-7u55-windows-i586.tar.gz
Windows x64	29.39 MB	jre-7u55-windows-x64.exe
Windows x64	41.49 MB	jre-7u55-windows-x64.tar.gz

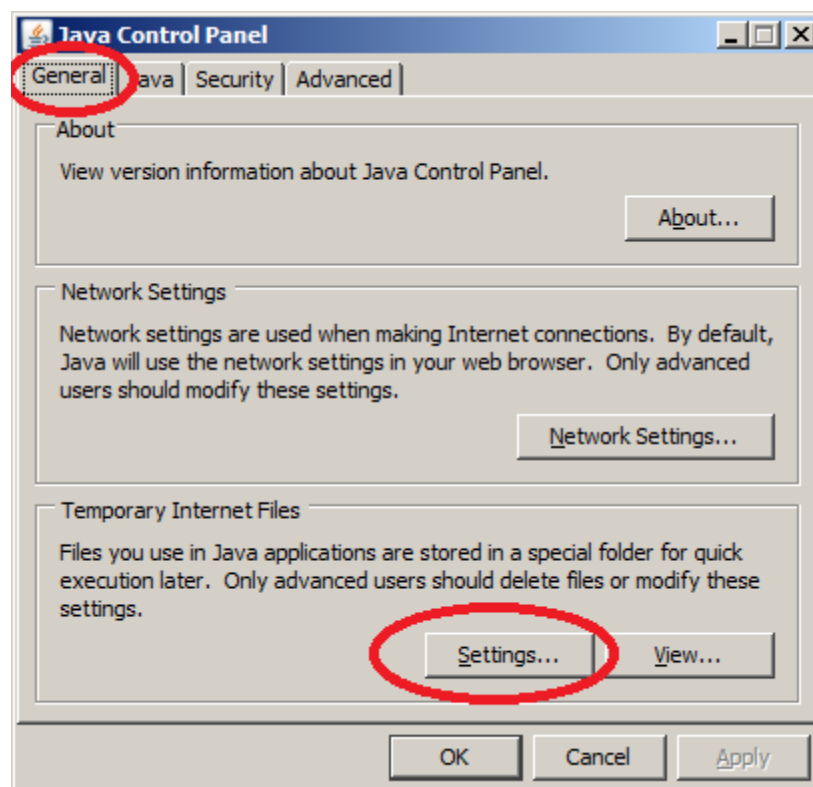
3. After downloading, run the downloaded program to install Java Plug-in.
4. Restart the computer if necessary.

8.3 Clear Java Cache

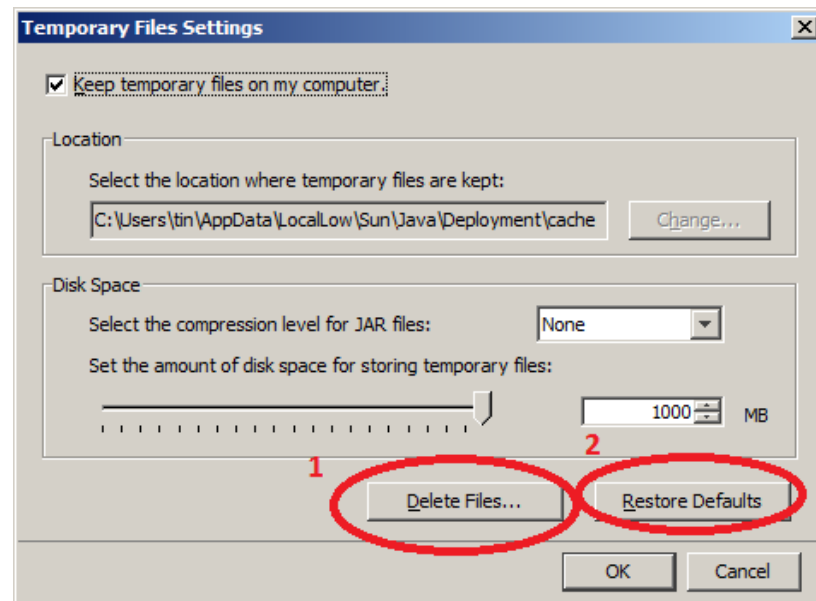
1. Go to Windows "Control Panel" again. Clicking on the "Java" icon.



2. Select "General Tab" and press "Settings..." button.

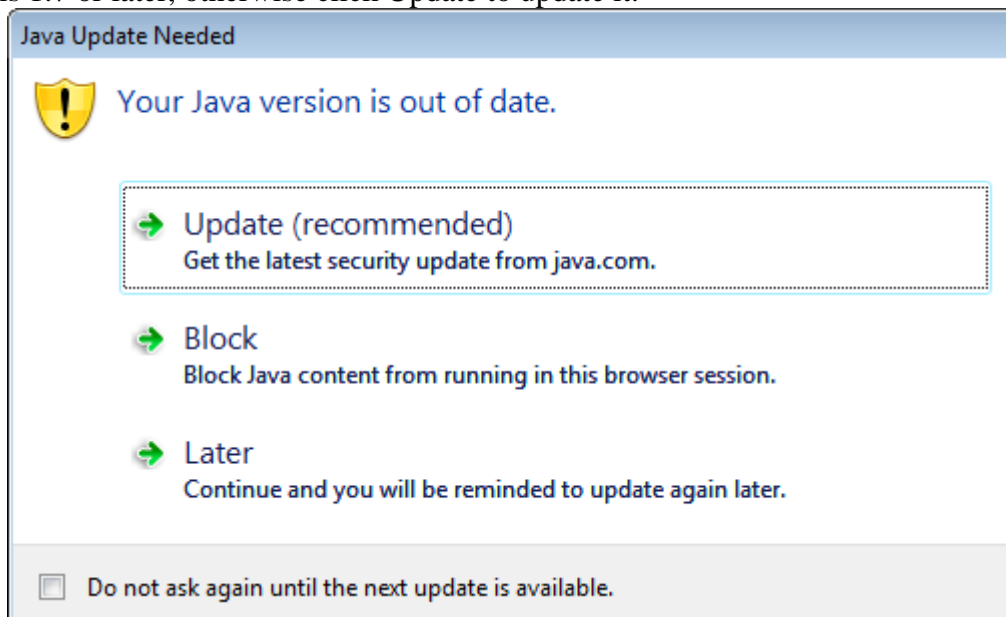


3. Click "Delete Files..." button, then click "Restore Defaults" button. Finally click OK buttons to exit.



8.4 Login and complete

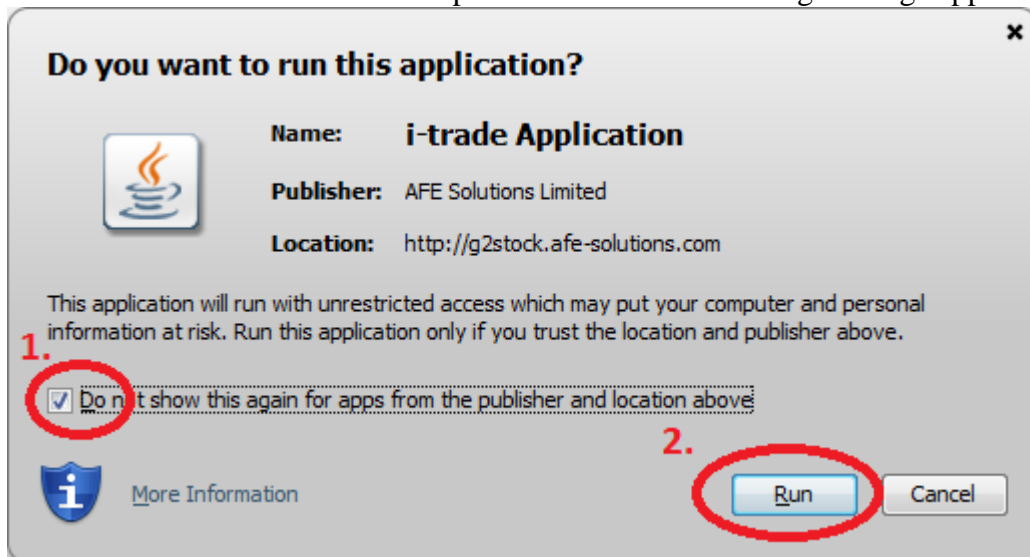
1. Go to the i-Trade Application page.
2. Open the i-Trade Application.
3. If Java Update Needed message box appeared, click Update/ Later if your Java Version is 1.7 or later, otherwise click Update to update it.



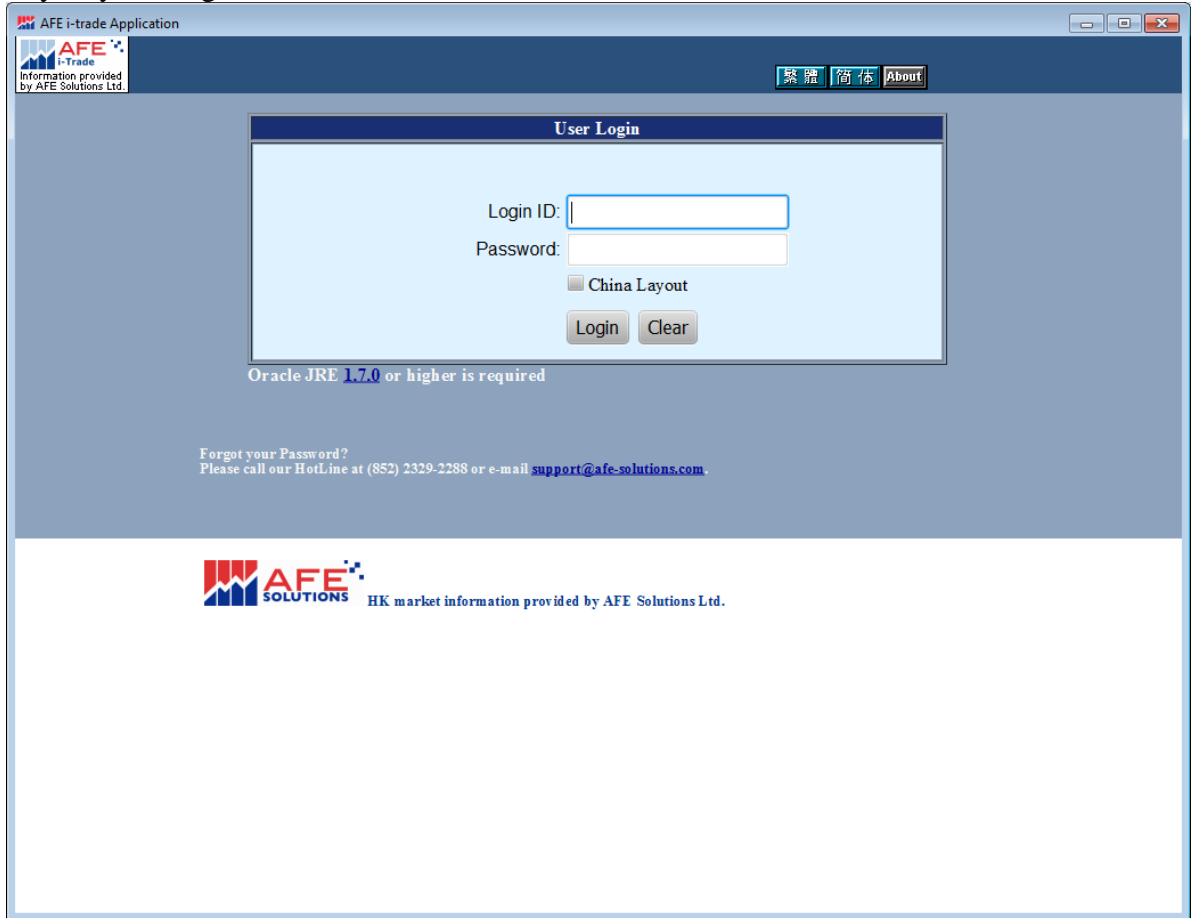
4. Follow the steps in **6.3 Clear Java Cache** if the following message appeared and open the application again.



5. Tick "Do not show...." and then press "Run" if the following message appeared.



6. Key-in your Login ID and Password.



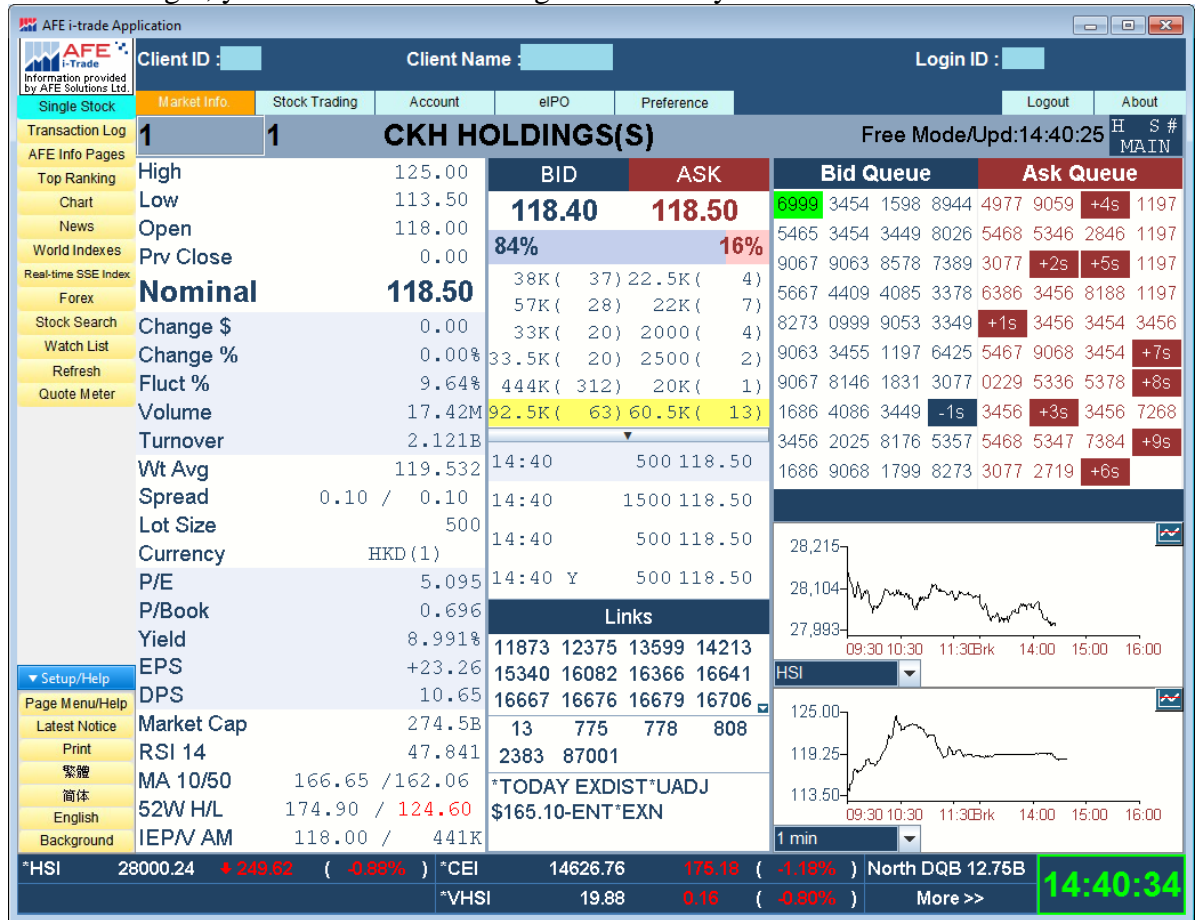
The screenshot shows the 'User Login' window of the AFE i-trade Application. The window has a title bar with the text 'AFE i-trade Application' and standard window controls. Inside the window, there is a header bar with the AFE logo and the text 'i-Trade Information provided by AFE Solutions Ltd.' on the left, and language selection buttons ('繁體', '简体', 'About') on the right. The main content area is light blue and contains the following elements:

- A 'User Login' title bar.
- Input fields for 'Login ID:' and 'Password:'.
- A checkbox labeled 'China Layout'.
- 'Login' and 'Clear' buttons.

Below the login form, the text 'Oracle JRE 1.7.0 or higher is required' is displayed. At the bottom of the window, there is a link for 'Forgot your Password?' and contact information: 'Please call our HotLine at (852) 2329-2288 or e-mail support@afe-solutions.com'.

At the very bottom of the application window, the AFE SOLUTIONS logo is shown on the left, and the text 'HK market information provided by AFE Solutions Ltd.' is on the right.

7. After login, you can see the following or similar layout.



-End-